

DRE

NEW
2020



DRE-PRINT · DRE-SYNCHRO · DRE-HIGHGLOSS

Door leaves from DRE-CLARO collection are varnished with high gloss lacquer, edge of the door leaf is coated with white matt or black matt edge band. Door leaf and door frame will be equipped with color-matched hardware in the colour of the door leaf unit (magnetic lock), in the colour of the door frame (latch plate, hinges). For this collection, we offer white door frames made in DRE-Forming technology, varnished with a high gloss lacquer or coated with black matt decor.



DRE-CLARO M1



STANDARD OPTIONS

- » door leaf surface is coated with primer material and varnished
- » gloss lacquer
- » edge without rebate in white or black colour
- » door leaf frame made of MDF
- » stabilising insert "honeycomb"
- » magnetic key lock, bathroom lock, patent insert lock or economic lock in white or black colour
- » sockets for 2 hidden concealed Estetic 80 hinges (hinge colour white or black)
- » MAT DRE glass, 4 mm thick

OPTIONS AVAILABLE WITH EXTRA CHARGE

- » door leaf „100”
- » ventilation undercut
- » core made of perforated chipboard
- » **NOTE** : third Estetic 80 hinge for non-rebated doors (additional payment is added to the price of the door frame)
- » aluminum ventilation grille
- » steel ventilation sleeves

DOOR FRAMES

- » for door leaves from DRE-CLARO collection, we recommend to use white lacquered door frames or in black matt decor

OPTION WITHOUT ADDITIONAL CHARGE

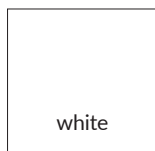
- » holes for ventilation sleeves
- » glass pane DECORMAT BROWN, DECORMAT GRAPHITE and transparent glass pane

M3 steel BULAJ - only matt or transparent glass pane is available.

Possible model options:

- M1 - full door leaf, without glazing
- M2 - MDF bulaj in black matt decor
- M3 - steel bulaj (matt or transparent glass pane)
- M4 - MDF frame in black matt decor

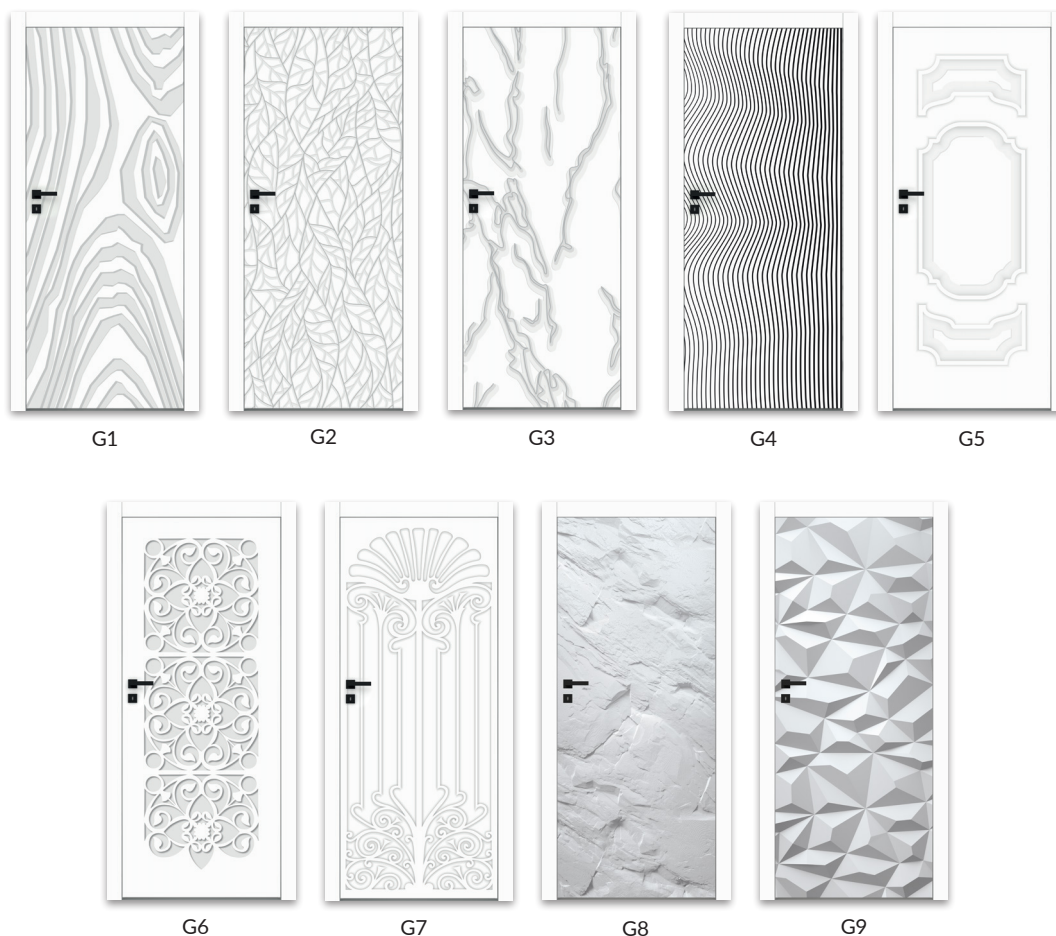
Decor



The G collection it is a perfect example how graphics design and DRE print-technology create a unique door pattern. There is a possibility to choose classic, modern, and abstract graphics design. Surface of the door leaf and door frame is finished with high-gloss lacquer, edge of the door leaf is coated with a white matt or black matt edge band. Door leaves and door frames are equipped with color-matched hardware, matched to the colour of the door leaf edge band (lock), and in the color of the door frame (latch plate, hinges). Door frame in the G collection is in white colour, made in technology DRE-Forming and varnished to a high gloss or available in a black matt decor.



DRE-Print M4-G2



STANDARD OPTIONS

- » door leaf surface coated with the primer material, overprinted with the pattern and varnished
- » gloss lacquer
- » edge without rebate in white or black colour
- » door leaf frame made of MDF
- » core made of perforated chipboard
- » magnetic key lock, bathroom lock, patent insert lock or economic lock in white or black colour
- » sockets for 2 hidden concealed Estetic 80 hinges (hinges colour white or black)
- » MAT DRE glass pane 4 mm thick (model M2, M4)

OPTIONS AVAILABLE WITH EXTRA CHARGE

- » door leaf „100“
- » ventilation undercut
- » **NOTE** : third Estetic 80 hinge for non-rebated doors (extra payment is added to the price of the door frame)
- » aluminum ventilation grille
- » steel ventilation sleeves

DOOR FRAMES

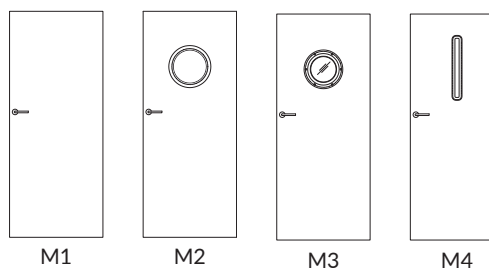
- » for "G" collection door leaves, we recommend white lacquered door frames or door frames in black matt decor

OPTION WITHOUT ADDITIONAL CHARGE

- » holes for ventilation sleeves
- » DECORMAT BROWN, DECORMAT GRAPHITE glass pane and transparent glass

Model options with possibility to choose graphic patterns G1-G9 :

- M1 - full door leaf, without glazing
- M2 - MDF bulaj in black matt decor
- M3 - steel bulaj (matt or transparent glass pane)
- M4 - MDF frame in black matt decor



Collection of DRE-HighGloss, this collection includes wenge, birch and designed modern etched sheet metal - Uranus decor . Door leaves are coated with high-gloss lacquer, edge of the door leaf is covered with a black matt edge band. Door leaf and door frame are equipped with colour-matched hardware in the color of the door leaf edge band (lock, latch plate, hinges). Door frames from the HighGloss collection are made in the door leaf unit decor, manufactured in DRE-Forming technology and varnished in a high gloss or there is an option to choose DRE-Cell Black Matt decor.



DRE-HIGHGLOSS HG1 birch



STANDARD OPTIONS

- » door leaf surface is coated with primer material in the colour of decor and varnished
- » gloss lacquer
- » edge without rebate in black colour
- » door leaf frame made of MDF
- » stabilising insert "honeycomb"
- » magnetic simple key lock, bathroom lock, patent insert lock or economic magnetic lock in black colour
- » sockets for 2 hidden concealed Estetic 80 hinges (hinges in black colour)
- » MAT DRE 4 mm glass (model HG2, HG4)

OPTIONS AVAILABLE WITH EXTRA CHARGE

- » door leaf „100"
- » ventilation undercut
- » core made of tubular perforated chipboard
- » **NOTE:** third hinge Estetic 80 for non-rebated doors (extra payment is added to the price of the door frame)
- » aluminum ventilation grille
- » steel ventilation sleeves

OPTION WITHOUT ADDITIONAL CHARGE

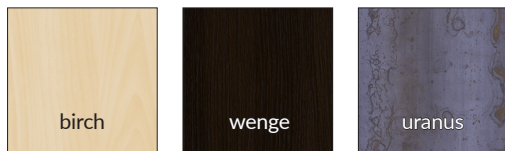
- » holes for ventilation sleeves
- » DECORMAT BROWN, DECORMAT GRAPHITE glass pane and transparent glass

DOOR FRAMES

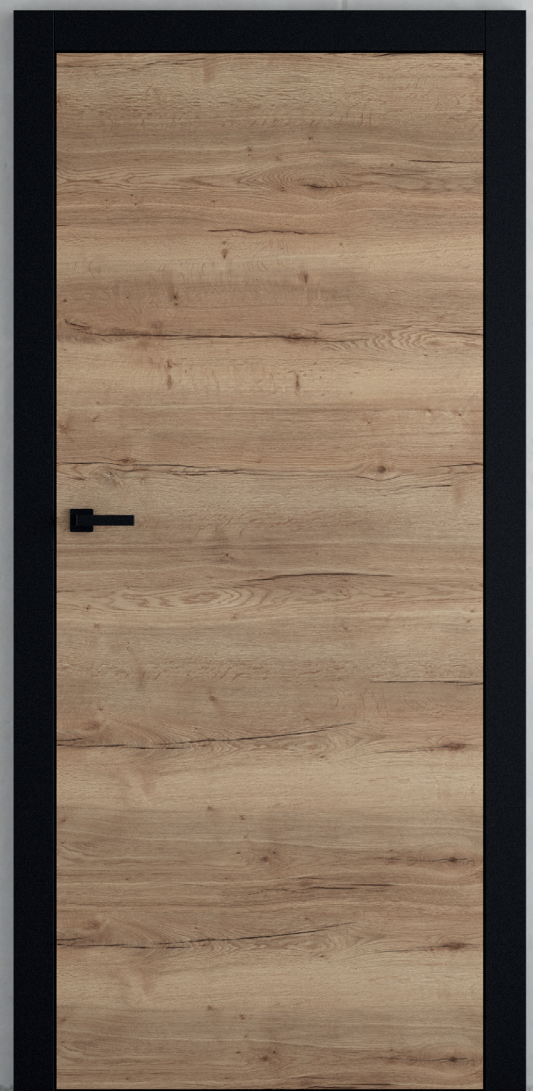
- » for door leaves from "HIGHGLOSS" collection we recommend to use lacquered door frames, in the same colour as the door leaf unit or in black matt decor

steel BULAJ HG3 - available only matt or transparent glass.

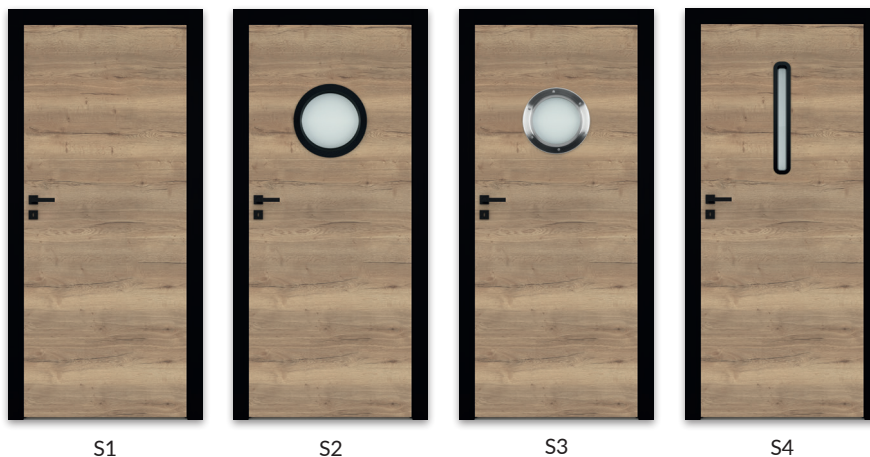
Decor



DRE-Synchro collection, is a collection of panel construction doors coated with synchronous laminates that imitate the wood structure with its drawing and texture. This combination creates an excellent haptic and visual effect of natural wood. Door leaves from DRE-Synchro collection are available with a black edge band and black locks and hinges, which in combination with the black non-rebated adjustable door frame creates a modern loft style door set.



DRE-Synchro S1 natural halifax oak



STANDARD OPTION

- » door leaf surface is coated with laminated, synchronous 3 mm or 4 mm thick board
- » edge without rebate in black colour
- » door leaf frame made of soft wood
- » stabilising insert "honeycomb"
- » magnetic simple key lock, bathroom lock, patent insert lock or economic magnetic lock in black colour
- » sockets for 2 hidden concealed Estetic 80 hinges (hinges in black colour)
- » MAT DRE glass, 4 mm thick

OPTIONS AVAILABLE WITH EXTRA CHARGE

- » door leaf „100"
- » ventilation undercut
- » plastic ventilation grille
- » aluminum ventilation grille
- » core made of perforated chipboard

NOTE: third hinge Estetic 80 for non-rebated doors
(extra payment is added to the price of the door frame)

DOOR FRAMES

- » for door leaves from "DRE-SYNCHRO" collection it is recommended to use door frames in black matt decor

OPTION WITHOUT ADDITIONAL CHARGE

- » ventilation sleeves
- » DECORMAT BROWN, DECORMAT GRAPHITE glass pane and transparent glass

steel BULAJ S3 - available only matt or transparent glass .

EGGER laminates 3 mm group 1



CLEAF 4 mm laminates group 2



SARA ECO 2 - this is a well known collection of invisible doors with the possibility to produce door leaves up to height of 2400 mm. The door leaf unit can be ordered with the option for future hand-painting, in the colour of the walls or in decor, available for this collection from the DRE palette.



SARA ECO 2 toffee oak

NON-REBATED - OPENING OUTWARDS AND REBATED - OPENING INWARDS

Sara Eco door leaf is an innovative solution for creative interior design with the use of "invisible" doors. This unique construction gives possibility to finish surface of door leaf in the colours of the walls.

CONSTRUCTION OF SARA ECO DOOR LEAF COMPRISES OF:

Aluminum door frame, "invisible" after assembly process, build in the wall or overlayed with sheets of plaster board. After detailing process, only visible part is rebate of the door frame, prepared for future painting, e.q. in the colours of the walls.

non- rebated panel construction door leaf is available in two finishing options:

- wide surfaces of door leaf are primed and ready for painting or paperhanging (e.q. in the colour of the walls). Edges of the leaf are covered with a paintable edge band. Painting is to be done at one's discretion or optional choose painted decor.
- wide surfaces of door leaf are coated with veneer from DRE - Cell or 3D group, while the edges of the leaf are covered with a edge band in the colour of the veneer.

OPTIONS AVAILABLE WITH EXTRA CHARGE WITH PRIMER

- ventilation undercut
- tubular chipboard in standard 202
- tubular chipboard in standard 220
- tubular chipboard in standard 240

STANDARD OPTION

- door leaf frame made of softwood
- sockets for 2, 3 or 4 ISTAR concealed hinges
- stabilising insert "honeycomb"
- magnetic lock for simple key, for bathroom lock, for cylinder lock or economic lock

OPTIONS AVAILABLE WITH EXTRA CHARGE IN DRE-CELL, 3D AND PAINTED

- ventilation undercut
- plastic ventilation grille
- aluminum ventilation grille
- dropping seal
- tubular chipboard in standard 202
- tubular chipboard in standard 220
- tubular chipboard in standard 240

The price of the door frame also includes 2, 3 or 4 concealed hinges.

Note: in option with stabilising insert as tubular chipboard, in standard 202 it is required to use 3 hinges.

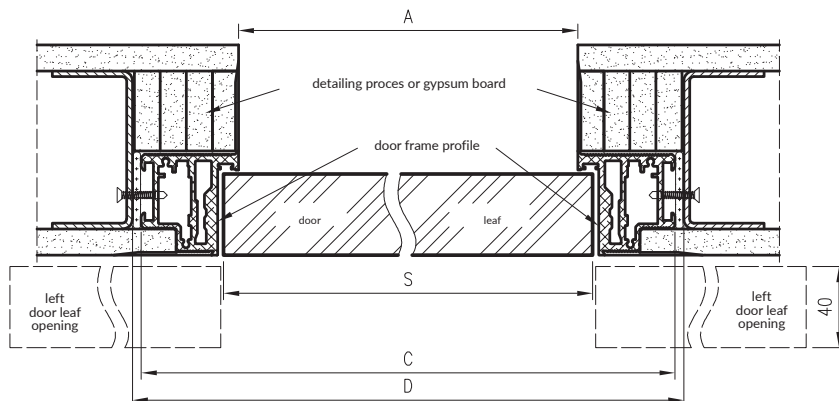
Decor DRE-Cell	white (textured)	white mat	white pine	elm siberian	silver	oak sand	bleached oak textured	vintage oak	ash	beech	alder	golden oak	
	calvados	walnut caramel	golden oak textured	walnut	walnut dark textured	gray oak textured***	tabac elm	elm anthracite	dark wenge	gray textured	black textured	toffee oak ***	
*** decor available only in horizontal wood grain													
								Decor 3D	grand oak	elm	walnut american	ebony	polish oak 3D
												Decor	primed
						white acrylic UV varnish - RAL 9003 ecru - RAL 9001 latte - Flugger 4362, NCS S1505-Y50R ashen - RAL 7035		Decor painted	white	ecru	latte	ashen	

SARA ECO 2

REBATED AND NON-REBATED DOOR LEAF
interior door leaves



Cross-section of the Sara Eco 2 non-rebated door - opening outwards



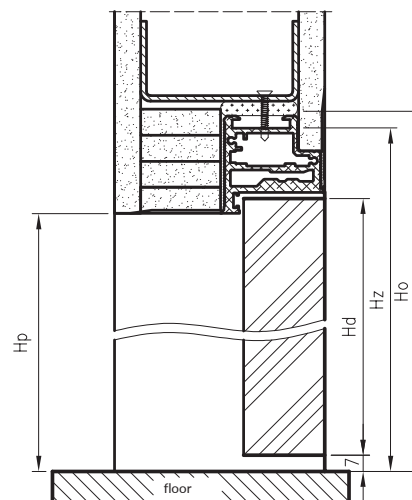
Dimensions of non-rebated door leaves

standard	hd	hp	H _z	ho
202x	2020	2020	2068	2075
220X	2200	2200	2248	2255
240X	2400	2400	2448	2455

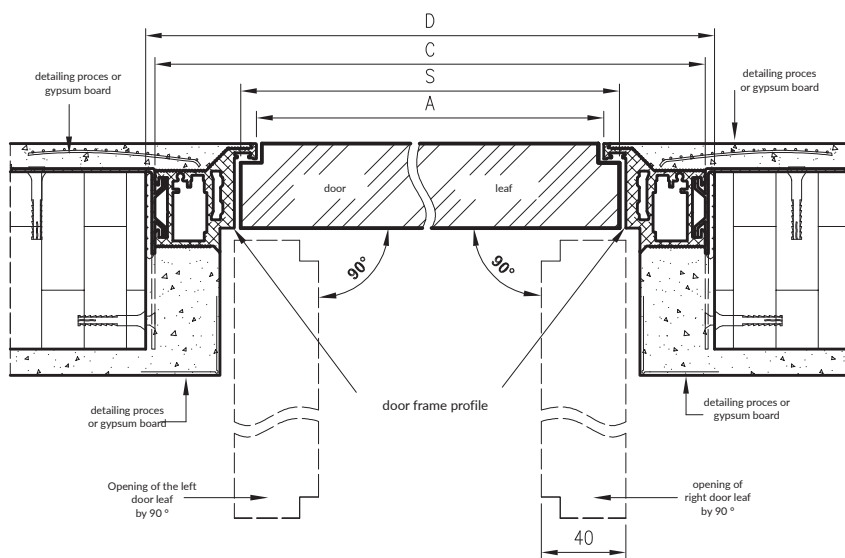
Dimensions of the door leaf width Sara Eco 2

	S	A	C	D
"60"	620	605	701	710
"70"	720	705	801	810
"80"	820	805	901	910
"90"	920	905	1001	1010
"100"	1020	1005	1101	1110

Vertical cross-section of the Sara Eco 2 non-rebated door leaves - opening outwards



Cross-section of the Sara Eco2 rebated door - opening inwards



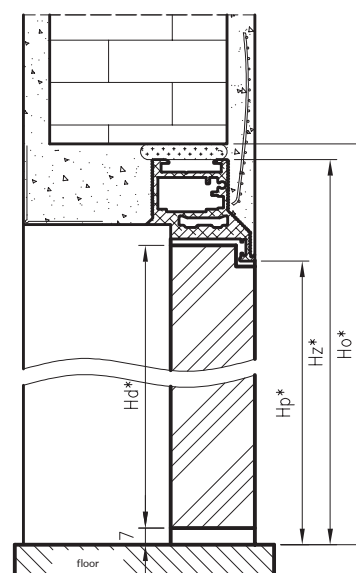
height dimensions of rebated doors

standard	hd *	hp *	H _z *	Ho*
202x	2030	2030	2078	2085
220X	2210	2210	2258	2265
240X	2410	2410	2458	2465

Dimensions of the door leaf width Sara Eco 2

	S	A	C	D
"60"	620	605	701	710
"70"	720	705	801	810
"80"	820	805	901	910
"90"	920	905	1001	1010
"100"	1020	1005	1101	1110

Vertical cross-section of the Sara Eco 2 rebated door - opening inwards



S - door leaf width
A - width of passage in door frame unit
C - external width of door frame
D - required width of wall passage
Hd - height of the door leaf
Hp - height in the door frame passage
Hz - external height of the door frame
Ho - height of the wall passage

* - Applies to rebated doors

DOOR FRAMES AND TECHNICAL INFORMATION

CONSTRUCTION

Adjustable non-rebated door frame is made of a high-quality wood-based MDF board. On its visual side it is entirely coated with a decorative wood-imitation DRE-Cell veneer (black matt) or varnished with high gloss lacquer (collection DRE-CLARO, DRE-Print "G" and DRE HighGloss). Lacquered door frames designed for DRE-CLARO, DRE-Print "G" and high-gloss collections, are enhanced with CPL laminate, which guarantees products highest quality.

Its construction allows to be used with door leaf with the thickness of 40 mm and its design allows for use on walls ranging between 75-320.

In DRE-CLARO and DRE-Print "G" collections - there is possibility to choose connection of main beams at 90 degree.

In DRE-HighGloss collection - there is possibility to choose connection of main beams at 45 or 90 degree.

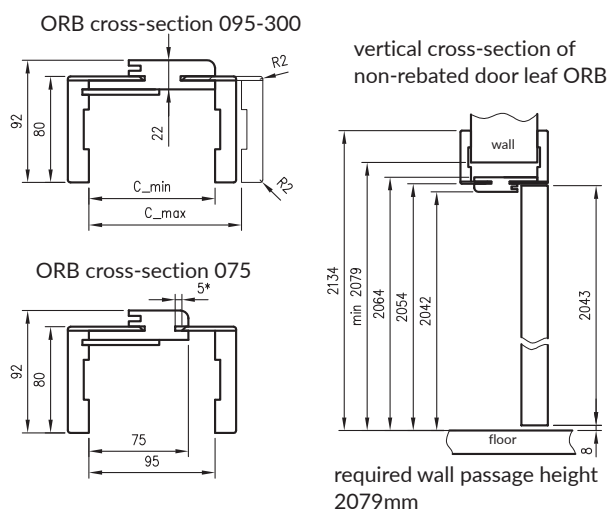
In DRE-Synchro collection - there is possibility to choose connection of main beams at 45 or 90 degree.

APPLICATION

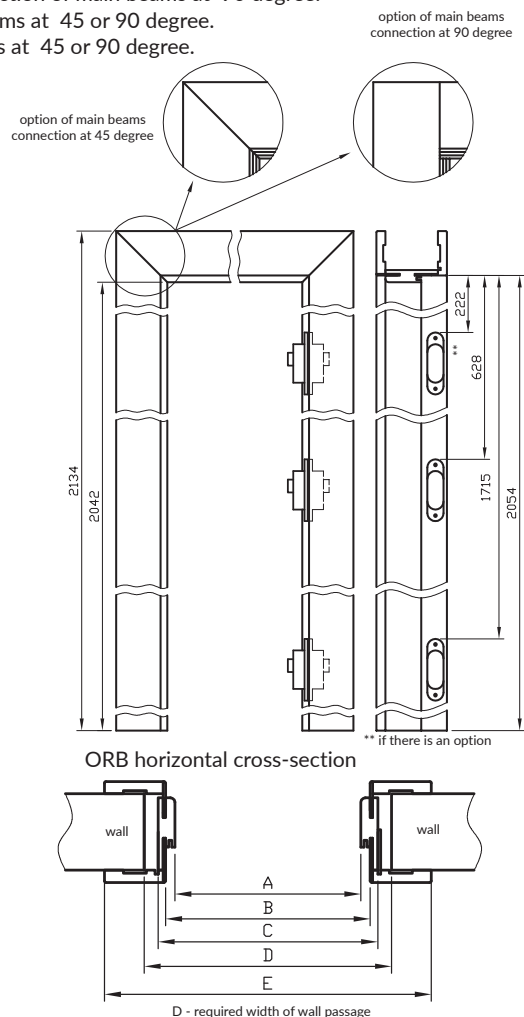
Adjustable non-rebated door frame can be used with all DRE non-rebated collections of the door leaf.

SET CONTAINS

Main beam (one horizontal and two vertical elements) with wide angular architrave (80 mm) with small rounding angles of the cross-section profile (R2), door seal, a set of hinges, all necessary components for the installation of door frames in accordance with the supplied instruction. Door frames are packed in cardboard boxes.



*075-095 door frame has a different cross section, for a 75-89 mm wall thickness, it will be necessary to shorten pen of the adjustable angle element.



for single-leaf doors

	A	B	C	D	E
60	627	651	671	711	811
70	727	751	771	811	911
80	827	851	871	911	1011
90	927	951	971	1011	1111
100	1027	1051	1071	1111	1211



DYSTRIBUTOR



82-300 Elbląg - Gronowo Górne, ul. Nefrytowa 4
Headquarters: phone 55 236 42 58
Customer service department: phone 55 236 42 42 to 48
fax 55 236 42 51
Marketing department: phone 55 236 42 40
working hours: 8:00 - 16:00
e-mail: dre@dre.pl, eksport@dre.pl www.dre.pl